



## Vertical Chain Disk Corners

The vertical chain disk corner uses the self cleaning wheel with the swept back spokes (APCD-607).

All chain disk loop systems which include inclined or vertical sections of chain, must use the self cleaning wheel with the swept back spokes (APCD-607). This wheel must be used in all corners in top locations where the chain travels upward. (See Figure 1.)

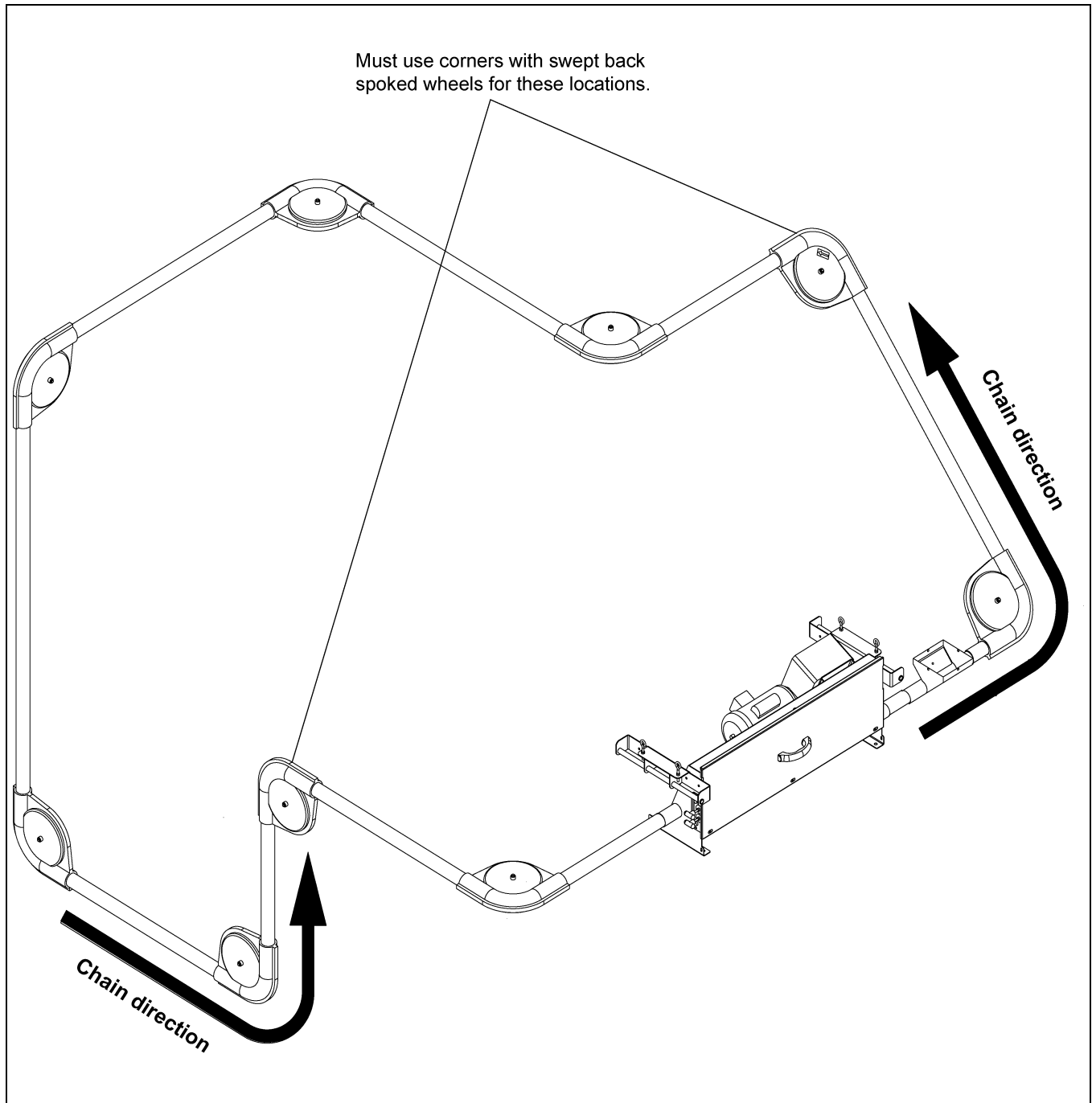


Figure 1

Date: 06-23-11

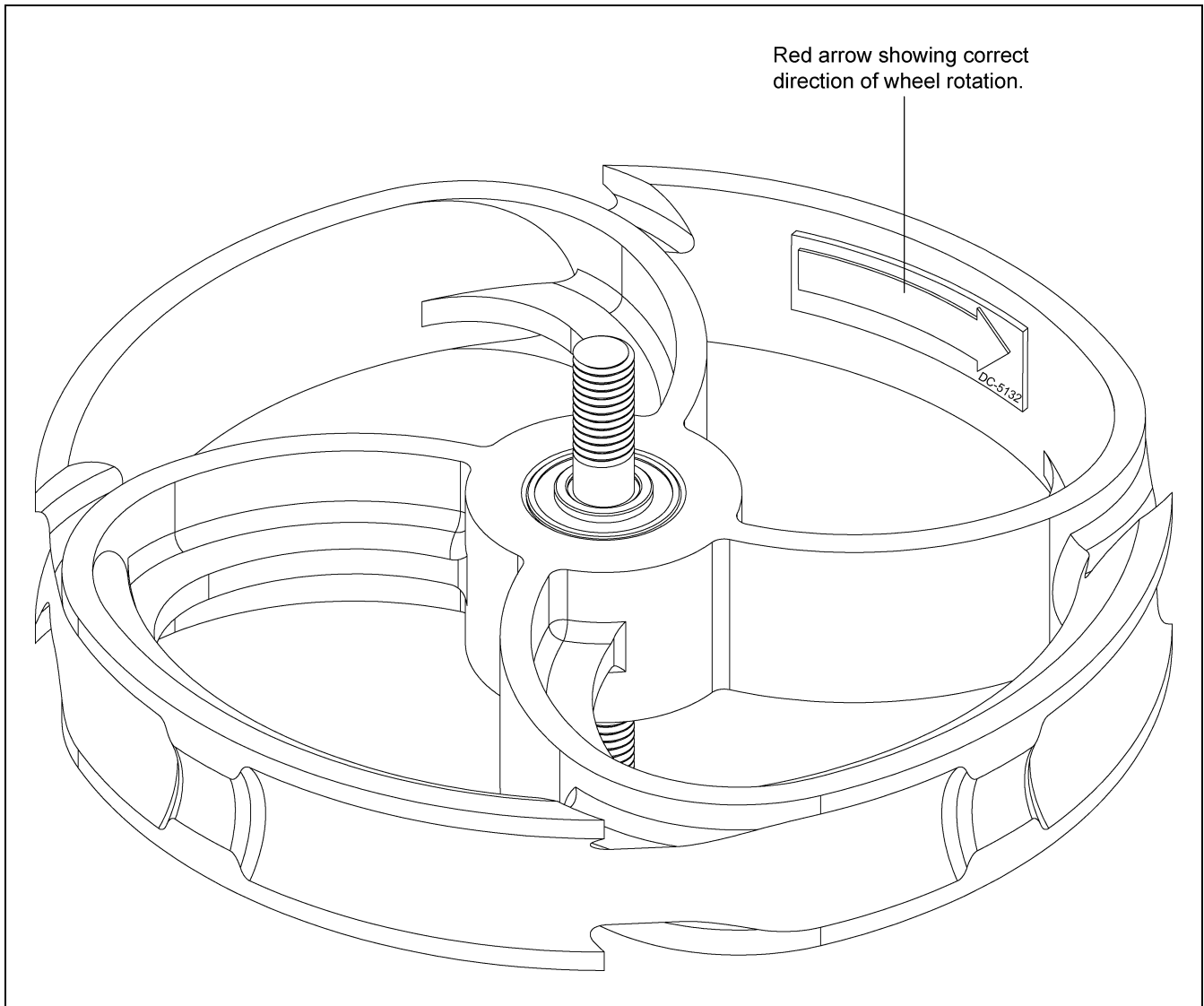
Printed in the U.S.A.  
Copyright © 2011 by Group  
www.gsiag.com



PNEG-1814  
Page 1 of 7

## Chain Disk Corner Assembly

The swept back spokes of the self cleaning corner wheel are designed to force feed outward away from the bearings. The corner must be installed so the chain operates in the direction of the “red arrow”. (See Figure 2.)



**Figure 2**

**NOTE:** *Installing the corner backwards will cause feed to be pulled inward towards the bearing and will result in premature failure of the bearings.*

### Horizontal Chain Disk Corners

The horizontal chain disk corner use the wheel with the self cleaning flipper (APCD-430A).

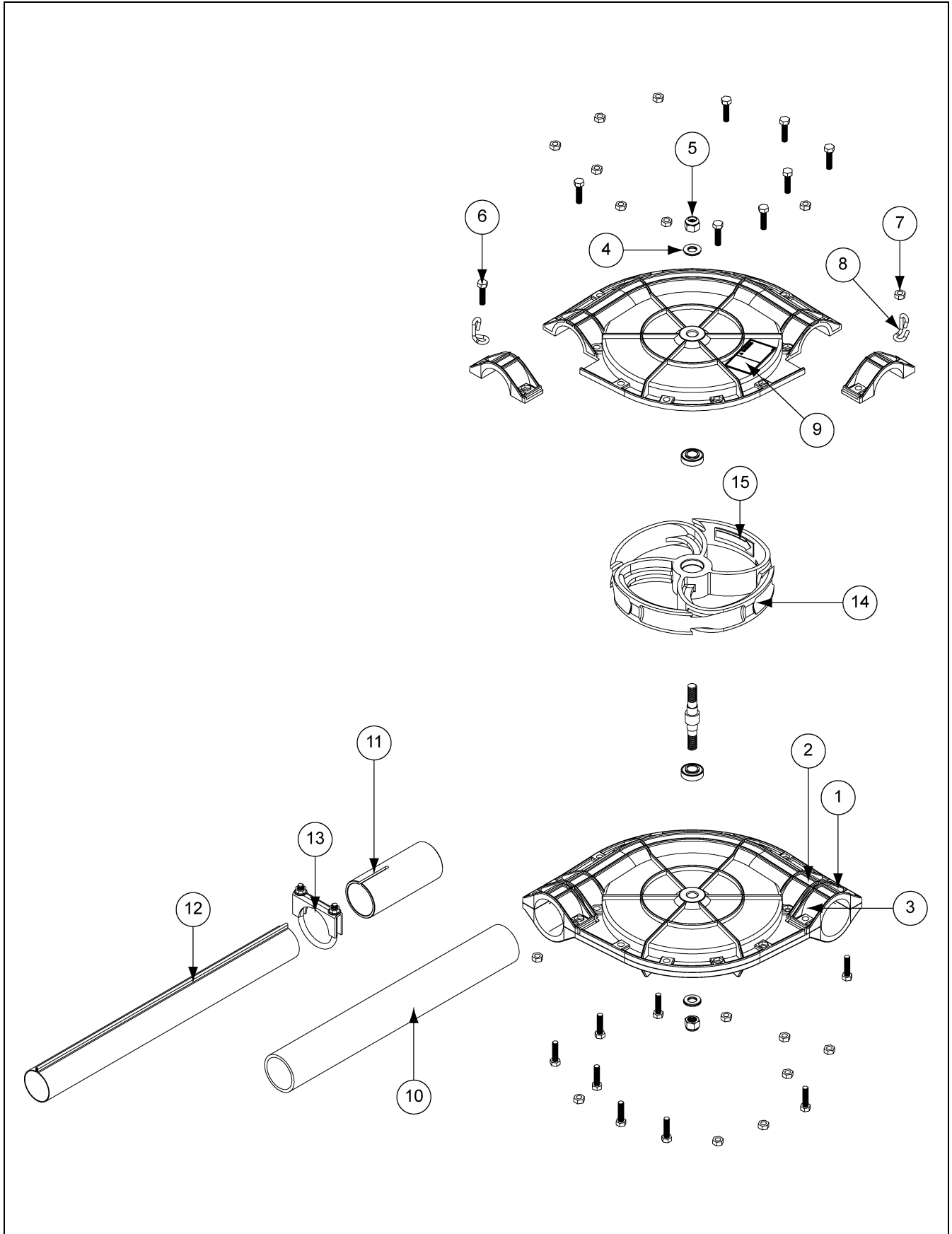
All chain disk loop systems containing horizontal corners should use the wheel with the self cleaning flipper (APCD-430A). This wheel can be installed in any direction due to the unique bi-directional flipper.

### Assembling Chain Disk Corner

Tools needed: 5/16" and 1/2" torque wrenches.

1. Open wheel housing.
2. Place proper wheel in bottom corner housing.
3. Place top corner housing over wheel.
4. Insert pivot bolt through center of wheel and both housings and fasten in place using 1/2" washer and nut. Use rubber backed flat washers to seal the pivot bolt from moisture.
5. Fasten corner housing together using 5/16"-18 x 1-1/4" bolts and nuts. Bolt heads should be positioned in the hex pockets of housing. *(See Pages 4 and 6.)*
6. Torque 5/16"-18 hex nuts to 5 ft. lbs. Torque 1/2"-12 hex nuts for center pivot to 10 ft. lbs.  
**NOTE:** *Do not overtighten. Never use impact wrench on stainless steel nuts and bolts.*
7. Suspend corners at each end with suspension loop brackets. **NOTE:** *Corners are heavy and will sag causing premature wear of the tubing if not suspended properly.*
8. All corners and tubing must be installed straight and level. PVC tubing must be supported every 4' and steel tubing every 10'. **NOTE:** *Failure to properly suspend tubing will void warranty.*

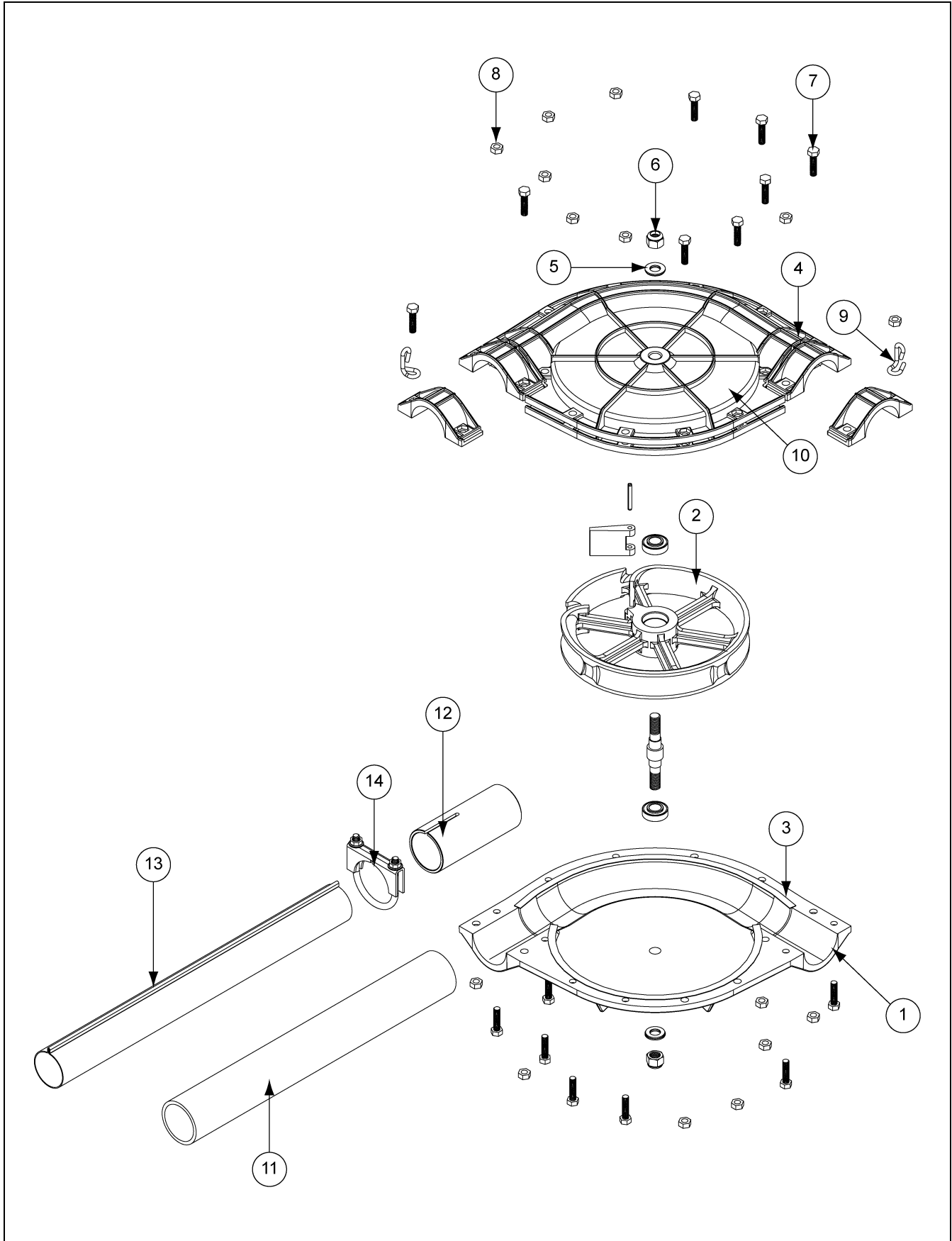
Chain Disk Vertical Corner Parts



## Chain Disk Vertical Corner Parts List

Ref #	Part #	Description	Qty
1	APCD-001P	90° Chain Disk Corner Bottom Half	1
2	20-5027	Seal, 1/8" x 3/8" Neoprene	1
3	TOP_NO_CLAMP	90° Chain Disk Corner Top Half	1
4	S-9379	Washer, 1/2" Neoprene Backed SS	2
5	S-7417	Nylock Nut 1/2"-13 SS	2
6	S-7683	Bolt, HHCS 5/16"-18 x 1-1/4" SS	16
7	S-8452	Flange Nut 5/16"-18 SS Waxed	16
8	APCD-313	Loop Chain Disk Corner Suspension	2
9	DC-1244	Decal, Warning Chain Disk Corner	1
10	PVC_TUBE_18_IN	18" PVC Tube	1
11	APCD-432-RED	Pipe, Ribbed Tube Adapter (Painted)	1
12	RIBBED_TUBE	20" Ribbed Tube	1
13	S-4490	2-1/4" Clamp	1
14	APCD-702	Corner Wheel Assembly with 2 Bearings and Shaft	1
15	DC-5132	Decal, Red Arrow (Direction)	1

Chain Disk Horizontal Corner Parts



## Chain Disk Horizontal Corner Parts List

Ref #	Part #	Description	Qty
1	APCD-001P	90° Chain Disk Corner Bottom Half	1
2	APCD-430	Self Cleaning Corner Wheel Assembly	1
3	20-5027	Seal, 1/8" x 3/8" Neoprene	1
4	TOP_NO_CLAMP	90° Chain Disk Corner Top Half	1
5	S-9379	Washer, 1/2" Neoprene Backed SS	2
6	S-7417	Nylock Nut 1/2"-13 SS	2
7	S-7683	Bolt, HHCS 5/16"-18 x 1-1/4" SS	16
8	S-8452	Flange Nut 5/16"-18 SS Waxed	16
9	APCD-313	Loop Chain Disk Corner Suspension	2
10	DC-1244	Decal, Warning Chain Disk Corner	1
11	PVC_TUBE_18_IN	18" PVC Tube	1
12	APCD-432-RED	Pipe, Ribbed Tube Adapter (Painted)	1
13	RIBBED_TUBE	20" Ribbed Tube	1
14	S-4490	2-1/4" Clamp	1