

# Bulk Feed Tank Anchor Point

Installation and Usage Guide

PNEG-1620

Date: 07-21-08

GSI GROUP



PNEG-1620



---

# Contents

<b>Chapter 1 Safety</b> .....	<b>4</b>
Safety Guidelines .....	4
Safety Instructions .....	5
<b>Chapter 2 Instructions</b> .....	<b>7</b>
Installation Instructions .....	7
Usage Instructions .....	10
<b>Chapter 3 Warranty</b> .....	<b>13</b>

### Safety Guidelines

This manual contains information that is important for you, the owner/operator, to know and understand. This information relates to protecting **personal safety** and **preventing equipment problems**. It is the responsibility of the owner/operator to inform anyone operating or working in the area of this equipment of these safety guidelines. To help you recognize this information, we use the symbols that are defined below. Please read the manual and pay attention to these sections. Failure to read this manual and its safety instructions is a misuse of the equipment and may lead to serious injury or death.



**This is the safety alert symbol. It is used to alert you to potential personal injury hazards. Obey all safety messages that follow this symbol to avoid possible injury or death.**



**DANGER** indicates an imminently hazardous situation which, if not avoided, will result in death or serious injury.



**WARNING** indicates a potentially hazardous situation which, if not avoided, could result in death or serious injury.



**CAUTION** indicates a potentially hazardous situation which, if not avoided, may result in minor or moderate injury.



**CAUTION** used without the safety alert symbol indicates a potentially hazardous situation which, if not avoided, may result in property damage.



**NOTE** indicates information about the equipment that you should pay special attention.

## Safety Instructions

Our foremost concern is your safety and the safety of others associated with this equipment. We want to keep you as a customer. This manual is to help you understand safe operating procedures and some problems which may be encountered by the operator and other personnel.

As owner and/or operator, it is your responsibility to know what requirements, hazards and precautions exist, and to inform all personnel associated with the equipment or in the area. Safety precautions may be required from the personnel. Avoid any alterations to the equipment. Such alterations may produce a very dangerous situation where **SERIOUS INJURY** or **DEATH** may occur.

This equipment shall be installed in accordance with the current installation codes and applicable regulations which should be carefully followed in all cases. Authorities having jurisdiction should be consulted before installations are made.

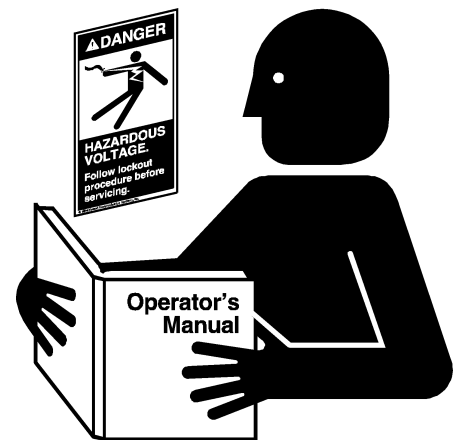
### Follow Safety Instructions

Carefully read all safety messages in this manual and safety signs on your machine. Keep signs in good condition. Replace missing or damaged safety signs. Be sure new equipment components and repair parts include the current safety signs. Replacement safety signs are available from the manufacturer.

Learn how to operate the machine and how to use controls properly. Do not let anyone operate without instruction.

Keep your machinery in proper working condition. Unauthorized modifications to the machine may impair the function and/or safety and affect machine life.

If you do not understand any part of this manual or need assistance, contact your dealer.



**Read and Understand Manual**

### Practice Safe Maintenance

Understand service procedures before doing work. Keep area clean and dry.

Never lubricate, service, or adjust machine while it is in operation. Keep hands, feet and clothing away from rotating parts.

Keep all parts in good condition and properly installed. Fix damage immediately. Replace worn or broken parts. Remove any built up grease oil and debris.



**Maintain Equipment and Work Area**

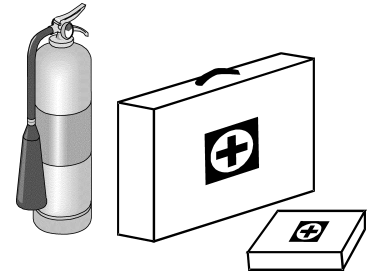
## 1. Safety

### Prepare for Emergencies

Be prepared if fire starts.

Keep a first aid kit and fire extinguisher handy.

Keep emergency numbers for doctors, ambulance service, hospital and fire department near your telephone.



**Keep Emergency Equipment Quickly Accessible**

### Wear Protective Clothing

Wear close fitting clothing and safety equipment appropriate to the job.

Remove all jewelry.

Long hair should be tied up and back.

Safety glasses should be worn at all times to protect eyes from debris.

Wear gloves to protect your hands from sharp edges on plastic or steel parts.

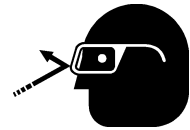
Wear steel toe boots to help protect your feet from falling debris. Tuck in any loose or dangling shoe strings.

A respirator may be needed to prevent breathing potentially toxic fumes and dust.

Wear hard hat to help protect your head.

Wear appropriate fall protection equipment when working at elevations greater than six feet (6').

**Eye Protection**



**Gloves**



**Steel Toe Boots**



**Respirator**



**Hard Hat**



**Fall Protection**



## Installation Instructions

The BFT anchor point is intended to provide an anchorage for use with a fall restraint system consisting of a body harness and lanyard or tag line. The anchor point has been designed for use with GSI Group's 6', 7', 9', 12' and 15' diameter sealed-roof bulk feed tanks. The bulk feed tank must be structurally sound before installation can take place. Multiple anchor points may be installed on a single bulk feed tank roof however only one individual may be anchored to the roof at any given time.

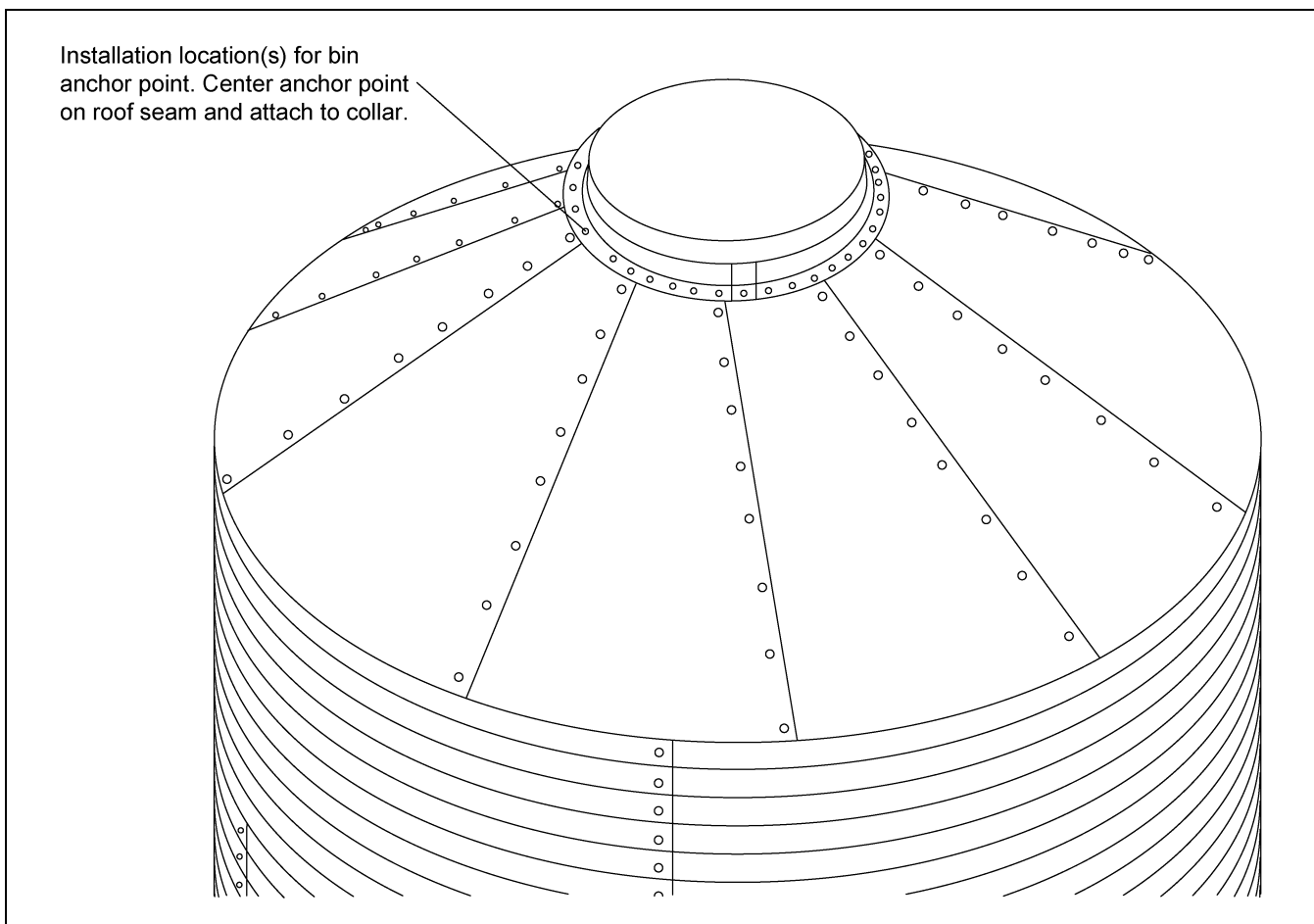
### Required Materials:

- Three (3) flange nuts (S-3611)
- Three (3) 5/16" x 1-1/4" bolts (S-277)
- One (1) BFT anchor point (MIS-6995)

### Recommended Tools:

- 1/2" Wrench
- 1/2" Socket and ratchet

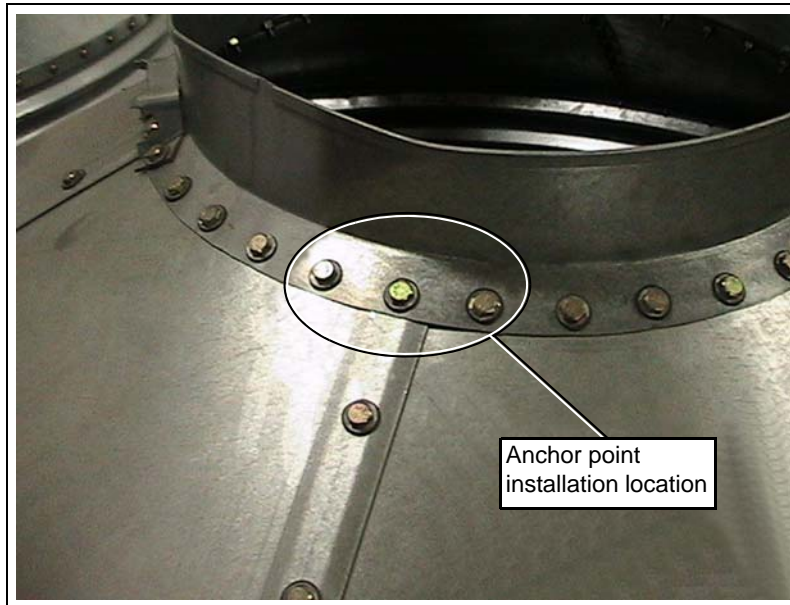
1. The BFT anchor point should be installed at the top of the tank where the peak ring collar meets the roof sheet. (See [Figure 2A](#).) Utilize the existing bolt holes along the perimeter of the peak ring collar.



**Figure 2A** Anchor Point Installation Location

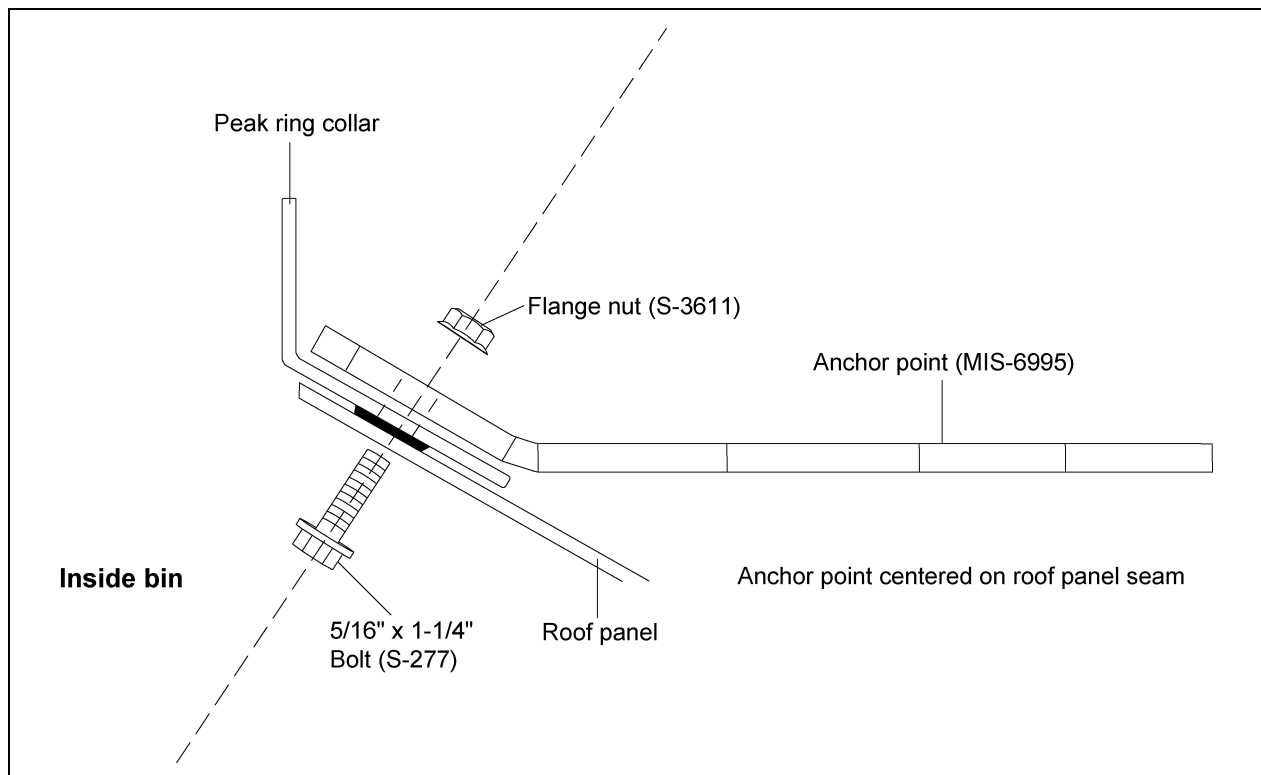
## 2. Instructions

2. For maximum strength, select a location that would place the anchor point over a roof panel seam.  
(See [Figure 2B](#).)



**Figure 2B** Anchor Point Location Centered over Roof Panel Seam

3. Once a location along the peak ring collar has been selected, remove a grouping of three (3) existing bolts from the perimeter of the collar. Insert three (3) 5/16" x 1-1/4" bolts (S-277) from the underside of the roof panel through the peak ring collar and through the three (3) bolt holes on the bin anchor point. Secure the bolts with three (3) flange nuts (S-3611). For placement details, see [Figure 2C](#) and [Figure 2D on Page 9](#).



**Figure 2C** Fastening Anchor Point to Roof



Figure 2D Anchor Point Fastened to Roof

4. Place the danger decal on the roof panel to the right or left of the anchor point. (See Figure 2E.)



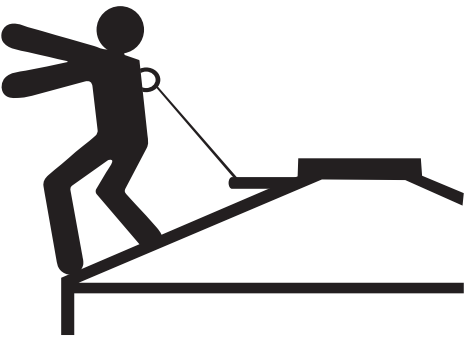
 <b>DANGER</b>	
<p><b>INCORRECT</b></p>  <p>The anchor point is <b>NOT</b> designed for use in fall <u>arrest</u>. Anchor point may detach from bin roof during a fall arrest. Serious injury or death will result.</p>	<p><b>CORRECT</b></p>  <p>The anchor point should be used as a fall <u>restraint</u> <b>ONLY</b>. Make sure the harness and lanyard length do not allow the user to reach the fall hazard.</p>
DC-1913	

Figure 2E Danger Decal

## Usage Instructions



*Any work requiring the use of personal protective equipment is dangerous. These activities are inherently dangerous and present the risk of serious injury and/or death. Any person using the BFT anchor point is personally responsible for obtaining qualified instruction on the proper use, techniques and limitations involved in such use. The user is responsible for following NFPA, OSHA, ANSI and all other applicable state and federal regulations regarding use of this product. Any person using this product is responsible for the proper care and maintenance of the product. Any person using this product in any manner assumes all risks and accepts full responsibility for any and all damages and injury of any kind, including death, which may result from the use of the BFT anchor point. Improper use, abuse, and/or lack of proper care and maintenance will increase the risk of serious injury or death.*



*The BFT anchor point has been designed to be used as part of a fall **RESTRAINT** system, **Not a FALL ARREST** system. Note the differences below.*

The BFT anchor point has been designed to be used as part of a fall **restraint** system. A fall restraint system, consisting of the anchor point, a body harness and connecting devices, prevents a worker from reaching the edge of a roof or other elevated structure.

It is important to note that the BFT anchor point **cannot be used as part of a fall arrest system**. A fall arrest system is designed to limit free-fall distance and prevent impact with surfaces below. A fall arrest anchor point must be able to support the weight of a fully suspended worker as well as withstand the forces associated with the worker's fall. The BFT anchor point and roof panels are **NOT** designed for this purpose. See [Figure 2F](#) for a comparison between fall restraint and fall arrest.

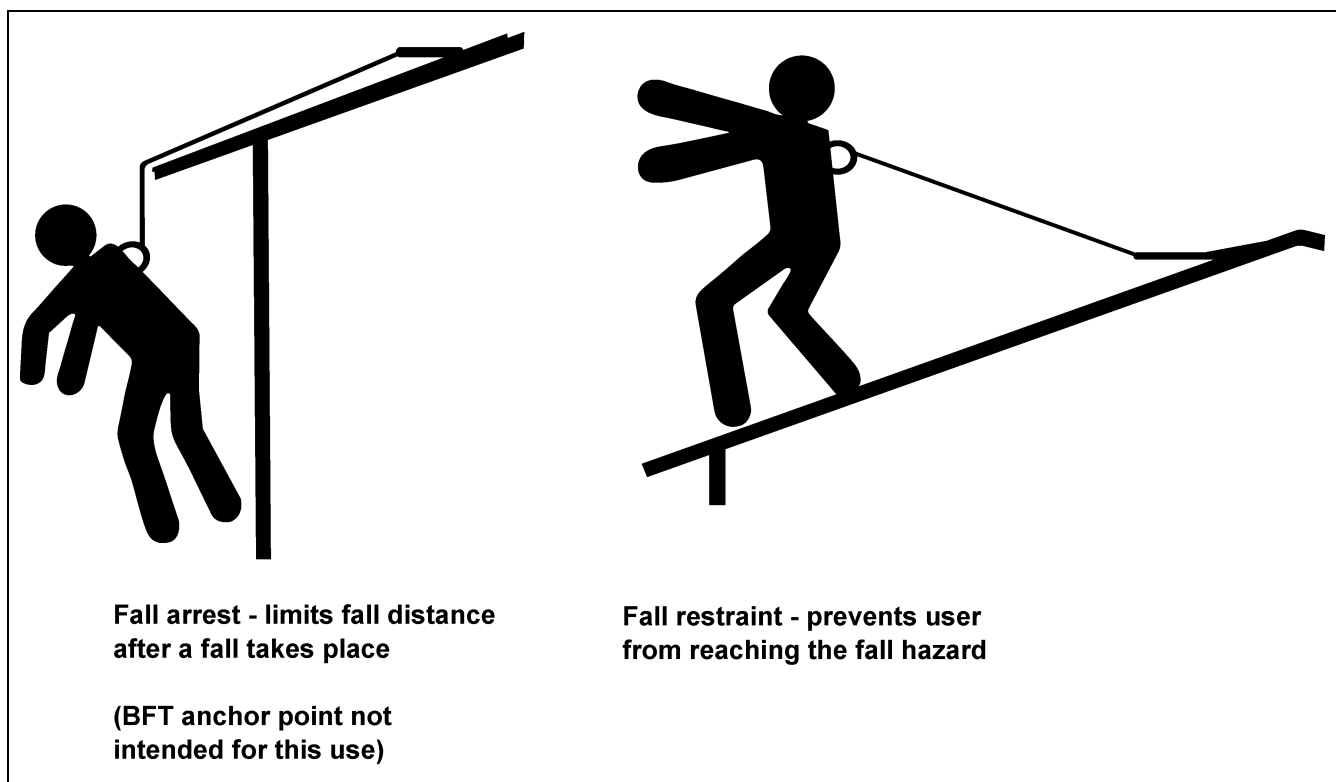


Figure 2F Difference between Fall Arrest and Fall Restraint

For the fall restraint system to be effective, the lifeline or lanyard used to connect the worker's harness to the BFT anchor point **MUST BE THE PROPER LENGTH TO RESTRICT THE USER FROM REACHING THE ROOF EDGE (FALL HAZARD)**. Remember to take into consideration the attachment point of the lifeline to the worker's harness. The lifeline should not allow any part of the worker's body to extend beyond the edge of the roof, even if the worker is laying flat.

An effective fall restraint systems relies on proper operation of the anchor point, body harness and connecting devices. All fall restraint equipment such as body harnesses, lanyards, lifelines and connecting hardware must meet O.S.H.A. requirements under sections 1926.104 and 1926.502(d). Training in the use of this equipment by a qualified person is required.

Only one person may utilize the anchor point at a time and, if multiple anchor points are installed on the same bulk feed tank, only one individual may be anchored to the bulk feed tank roof at any given time. The anchor point is designed to support the weight of a 300 lbs. individual. Do not exceed this weight requirement. If the anchor point is subjected to a fall arrest situation, discontinue use of the anchor point until such time that an inspection of the anchor point and BFT roof can take place by a qualified person.

---

# NOTES



## Limited Warranty

The GSI Group, LLC. ("GSI") warrants products which it manufactures to be free of defects in materials and workmanship under normal usage and conditions for a period of 12 months after sale to the original end-user or if a foreign sale, 14 months from arrival at port of discharge, whichever is earlier. The end-user's sole remedy (and GSI's only obligation) is to repair or replace, at GSI's option and expense, products that in GSI's judgment, contain a material defect in materials or workmanship. Expenses incurred by or on behalf of the end-user without prior written authorization from the GSI Warranty Group shall be the sole responsibility of the end-user.

**Warranty Extensions:** The Limited Warranty period is extended for the following products:

	Product	Warranty Period
<b>AP Fans and Flooring</b>	Performer Series Direct Drive Fan Motor	3 Years
	All Fiberglass Housings	Lifetime
	All Fiberglass Propellers	Lifetime
	Apex Flooring	10 Years *
<b>Cumberland Feeding/Watering Systems</b>	Feeder System Pan Assemblies	5 Years **
	Feed Tubes (1.75" & 2.00")	10 Years *
	Centerless Augers	10 Years *
	Watering Nipples	10 Years *
<b>Grain Systems</b>	Grain Bin Structural Design	5 Years
	Portable Dryers	2 Years
	Portable Dryer Frames, Screens and Internal Infrastructure †	5 Years

\* Warranty prorated from list price:  
 0 to 3 years – no cost to end-user  
 3 to 5 years – end-user pays 25%  
 5 to 7 years – end-user pays 50%  
 7 to 10 years – end user pays 75%

\*\* Warranty prorated from list price:  
 0 to 3 years – no cost to end-user  
 3 to 5 years – end-user pays 50%

† Motors, burner components and moving parts not included

### Conditions and Limitations:

THERE ARE NO WARRANTIES THAT EXTEND BEYOND THE LIMITED WARRANTY DESCRIPTION SET FORTH ABOVE. SPECIFICALLY, GSI MAKES NO FURTHER WARRANTY OF ANY KIND, EXPRESS OR IMPLIED, INCLUDING, WITHOUT LIMITATION, WARRANTIES OF MERCHANTABILITY OR FITNESS FOR A PARTICULAR PURPOSE OR USE IN CONNECTION WITH: (i) PRODUCT MANUFACTURED OR SOLD BY GSI OR (ii) ANY ADVICE, INSTRUCTION, RECOMMENDATION OR SUGGESTION PROVIDED BY AN AGENT, REPRESENTATIVE OR EMPLOYEE OF GSI REGARDING OR RELATED TO THE CONFIGURATION, INSTALLATION, LAYOUT, SUITABILITY FOR A PARTICULAR PURPOSE, OR DESIGN OF SUCH PRODUCTS.

GSI shall not be liable for any direct, indirect, incidental or consequential damages, including, without limitation, loss of anticipated profits or benefits. The sole and exclusive remedy is set forth in the Limited Warranty, which shall not exceed the amount paid for the product purchased. This warranty is not transferable and applies only to the original end-user. GSI shall have no obligation or responsibility for any representations or warranties made by or on behalf of any dealer, agent or distributor.

GSI assumes no responsibility for claims resulting from construction defects or unauthorized modifications to products which it manufactured. Modifications to products not specifically delineated in the manual accompanying the equipment at initial sale will void the Limited Warranty.

This Limited Warranty shall not extend to products or parts which have been damaged by negligent use, misuse, alteration, accident or which have been improperly/inadequately maintained. This Limited Warranty extends solely to products manufactured by GSI.

Prior to installation, the end-user has the responsibility to comply with federal, state and local codes which apply to the location and installation of products manufactured or sold by GSI.

This equipment shall be installed in accordance with the current installation codes and applicable regulations which should be carefully followed in all cases. Authorities having jurisdiction should be consulted before installations are made.

G S I G R O U P



**GSI Group**  
**1004 E. Illinois St.**  
**Assumption, IL 62510-0020**  
**Phone: 1-217-226-4421**  
**Fax: 1-217-226-4420**  
**[www.gsiag.com](http://www.gsiag.com)**