



These instructions cover replacing a Pektron board with Fenwal board in a SUPER SAVER CE HEATER. For in-field service, you will need nine (3006-0107) spade terminals and one (3006-9053) spade terminal for the heavy DSI cable on the top of the Fenwal board.

All the bottom wires on the terminal connection block stay the same. *(See Figure 1.)*

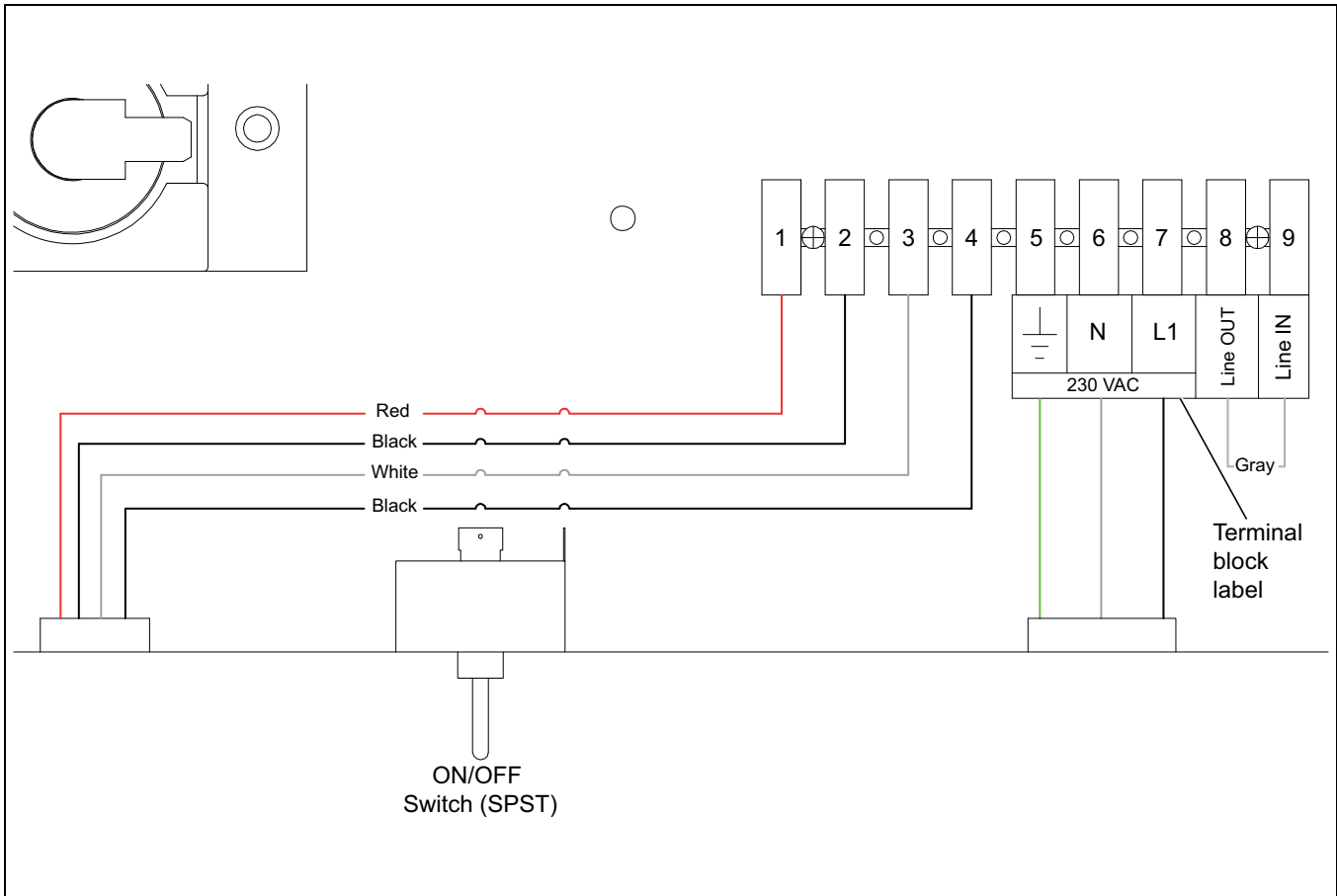


Figure 1 Bottom Terminal Connections

See Figure 7 on Page 6 for the completed wiring connections. *See Figure 4-6 on Pages 3-5* only highlight the wires for steps called out in that section.

Before You Begin

Use the normal shut down procedure.

1. Close all the manual fuel supply valves.
2. With the heater lit, allow the heater to burn off the excess fuel in the gas supply line.
3. Disconnect the main power supply.

Remove the Pektron board and cut the wires from 4, 5 and 7 pin connection plugs and install the spade terminals onto the wires.



Retrofit Kit Installation for Super Saver CE Heater (3591-2258)

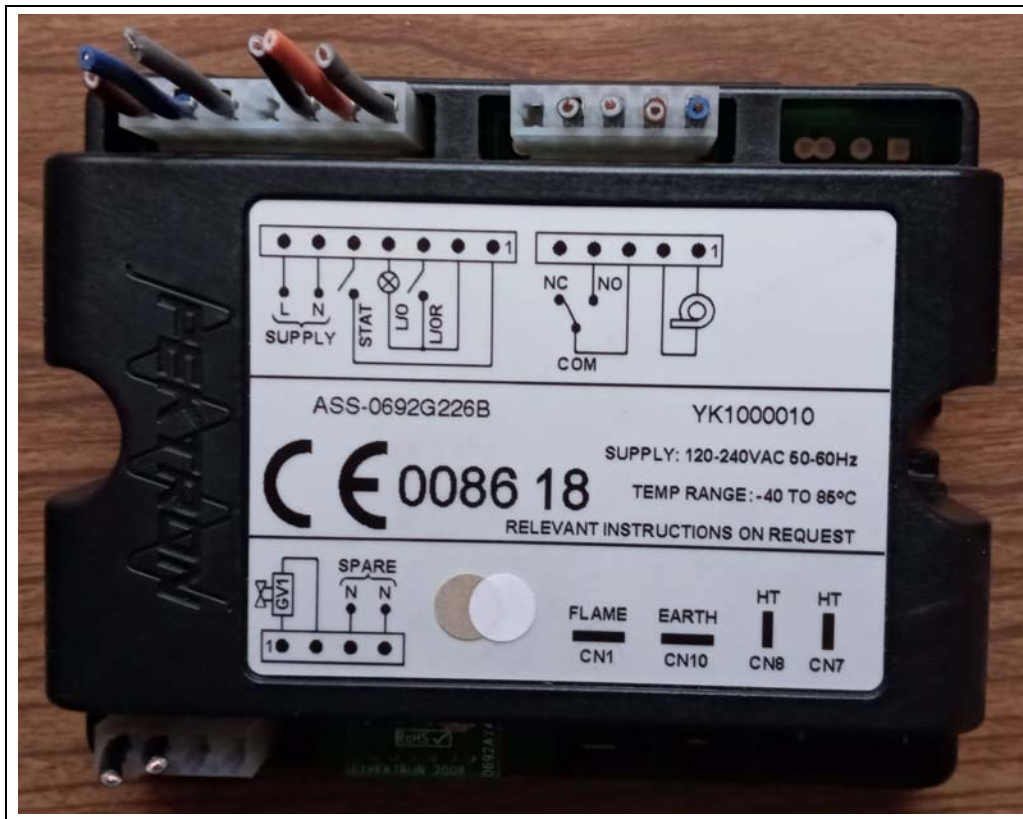


Figure 2 Pektron Board

NOTE: Remove the filter and filter wires.

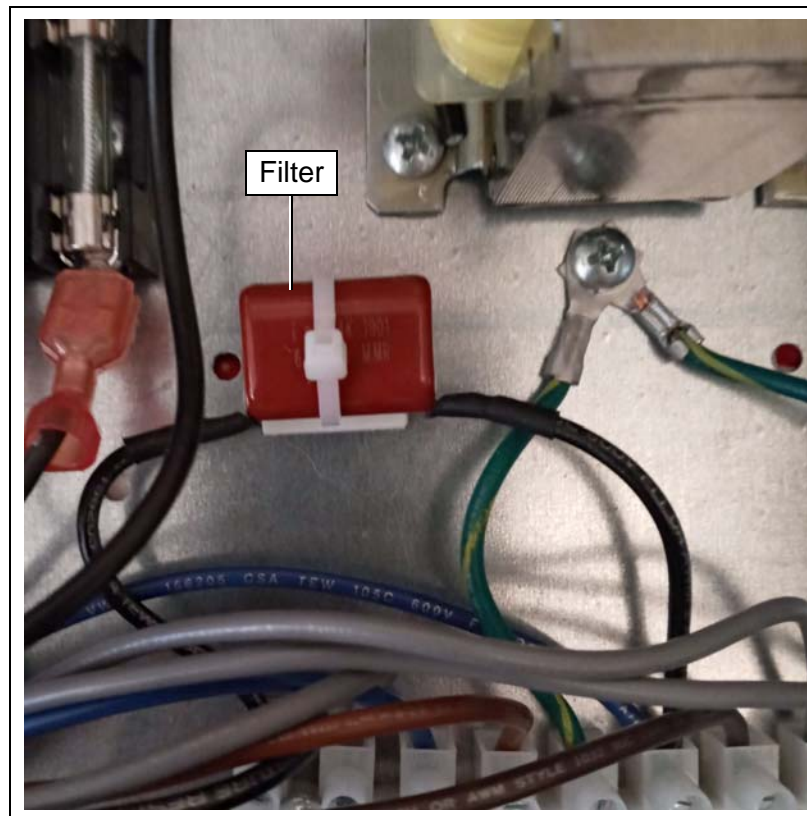


Figure 3 Filter

Reconnect the wires as directed below:

Transformer Connections

Left Side

1. Remove the left 230 transformer terminal wire (brown) from the bottom of the left fuse and then remove the left fuse.
2. Connect the left 230 transformer wire (brown) into the ON-OFF switch.
3. Connect the left 230 transformer terminal wire (black) to L1 on the Fenwal board.
4. Connect the left 0 transformer terminal wire (black) to the #6 top terminal block.

Right Side (Stays the same)

5. The right 24 transformer terminal wire (black) should be connected to the top of right fuse.
6. The right 0 transformer terminal wire (GN/YW) should be connected to the grounding screw.
7. The ground wire (GN/YW) should be connected from the grounding screw to the #5 top terminal block.

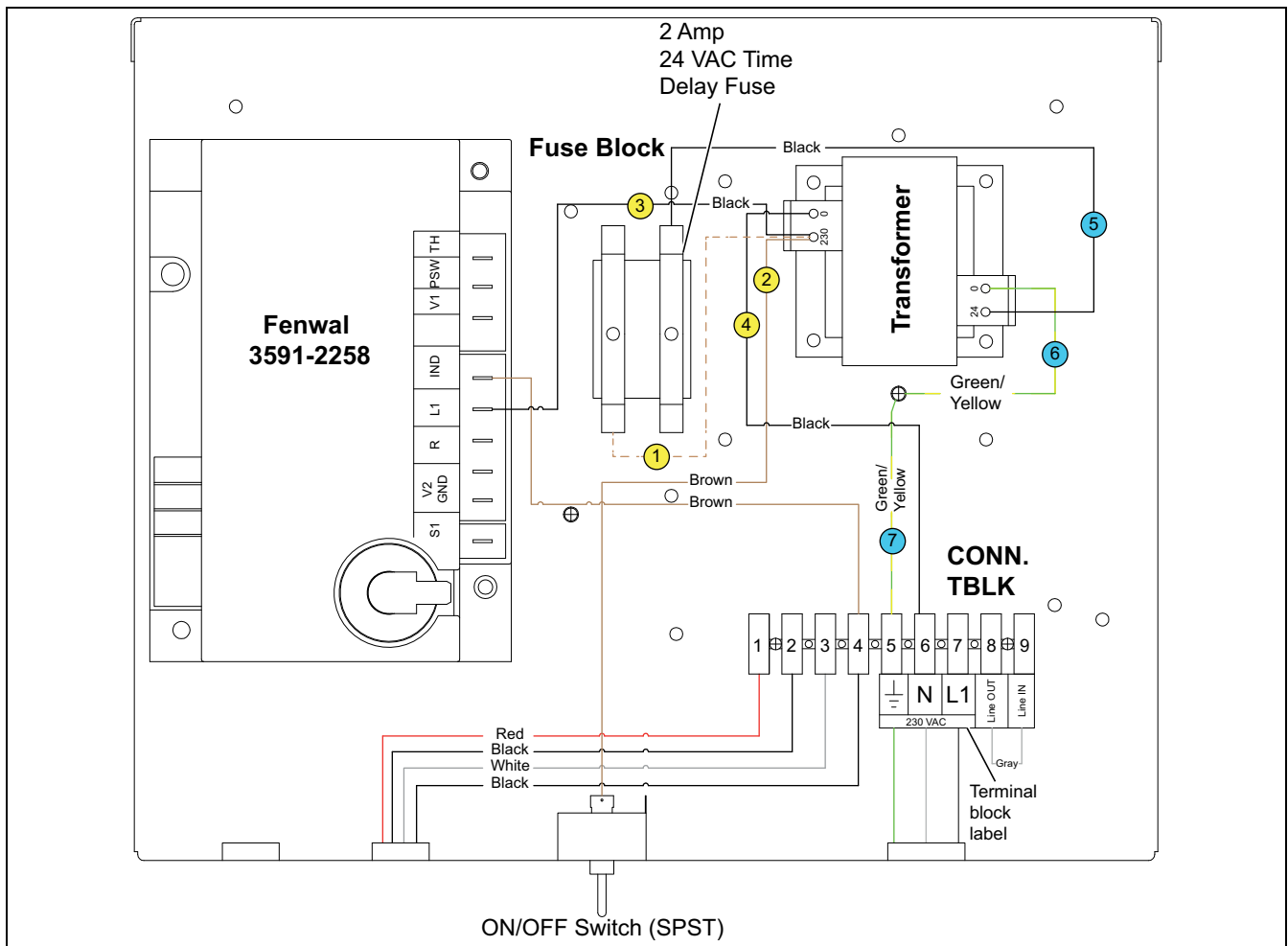


Figure 4 Transformer Connections

Retrofit Kit Installation for Super Saver CE Heater (3591-2258)

Terminal Block Connections

8. Connect the bottom right fuse wire (white) to the #9 top terminal block.
9. Connect the gray wire between the top terminal blocks #9 and #2.
10. Connect the gray wire from the top terminal block #8 to the Fenwal TH.
11. Connect the purple wire from the top terminal block #8 to Fenwal R.
12. The brown wire should be connected between the top terminal block #7 to the right side of the ON-OFF switch.
13. Connect the blue wire between the top terminal blocks #6 and #3.
14. Connect the brown wire between the top terminal block #4 to Fenwal IND.
15. Connect the black wire between the top terminal block #1 to Fenwal PSW.

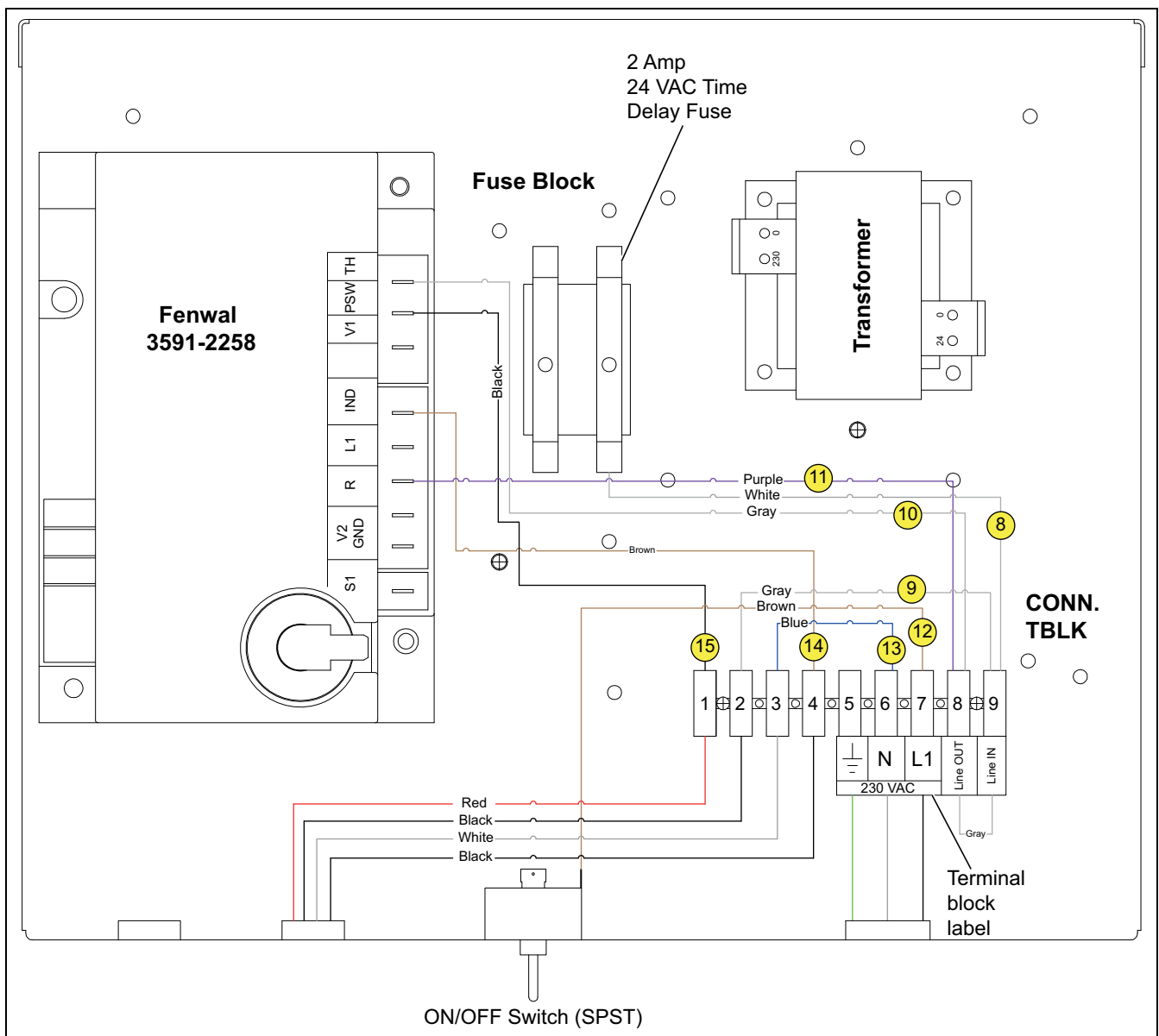


Figure 5 Terminal Block Connections

Fenwal Connections

16. Connect the green/yellow ground wire from the bottom Fenwal V2 GND to the grounding screw.
17. Connect the orange wire from the top Fenwal V2 GND to the grounding screw.
18. Connect the yellow flame probe wire to the Fenwal S1.
19. The green ground wire from the DSI should be connected to the grounding screw.
20. Connect the black Hi-Limit wire to the Fenwal V1.

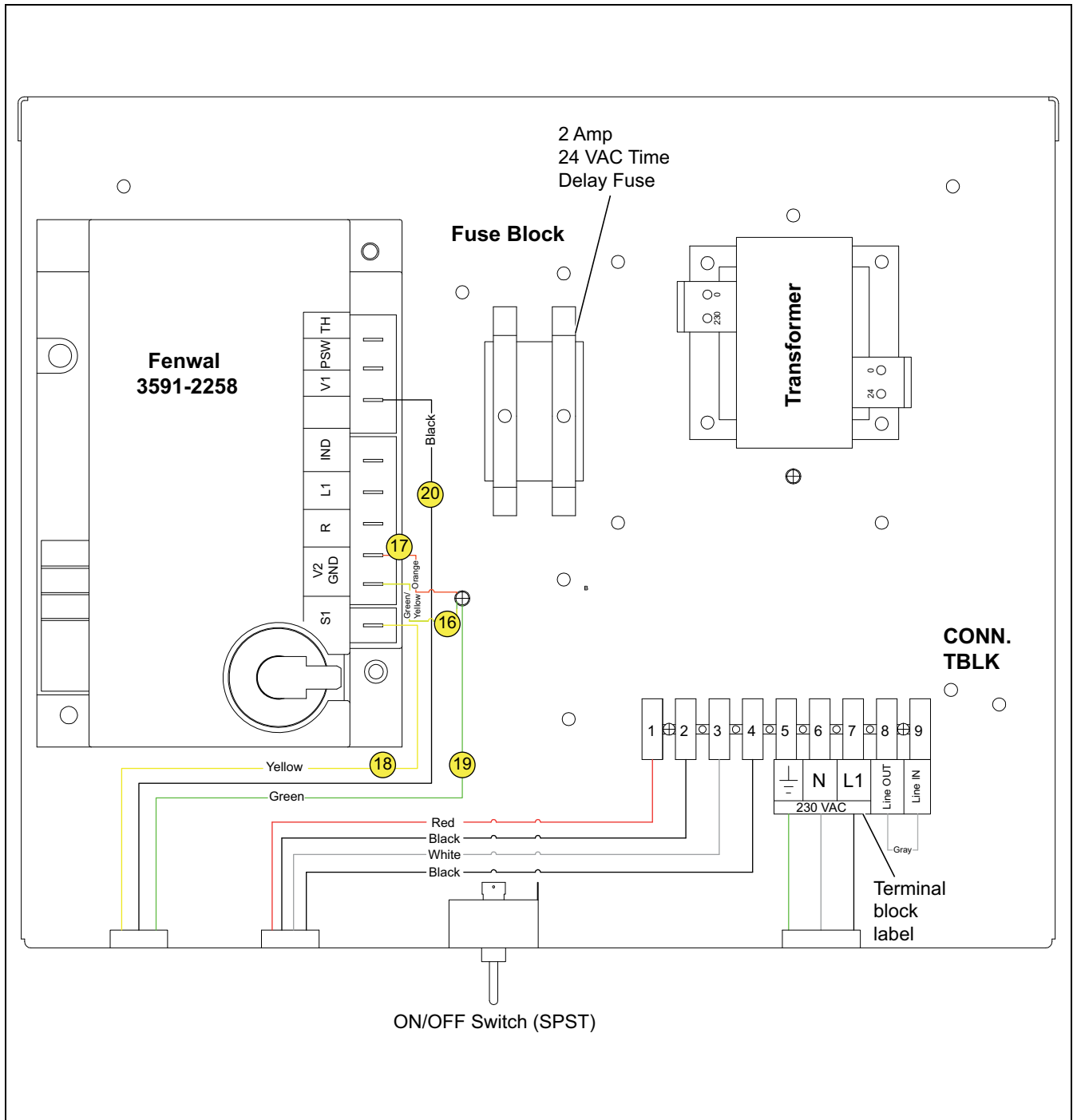


Figure 6 Fenwal Connections

Wiring Diagram

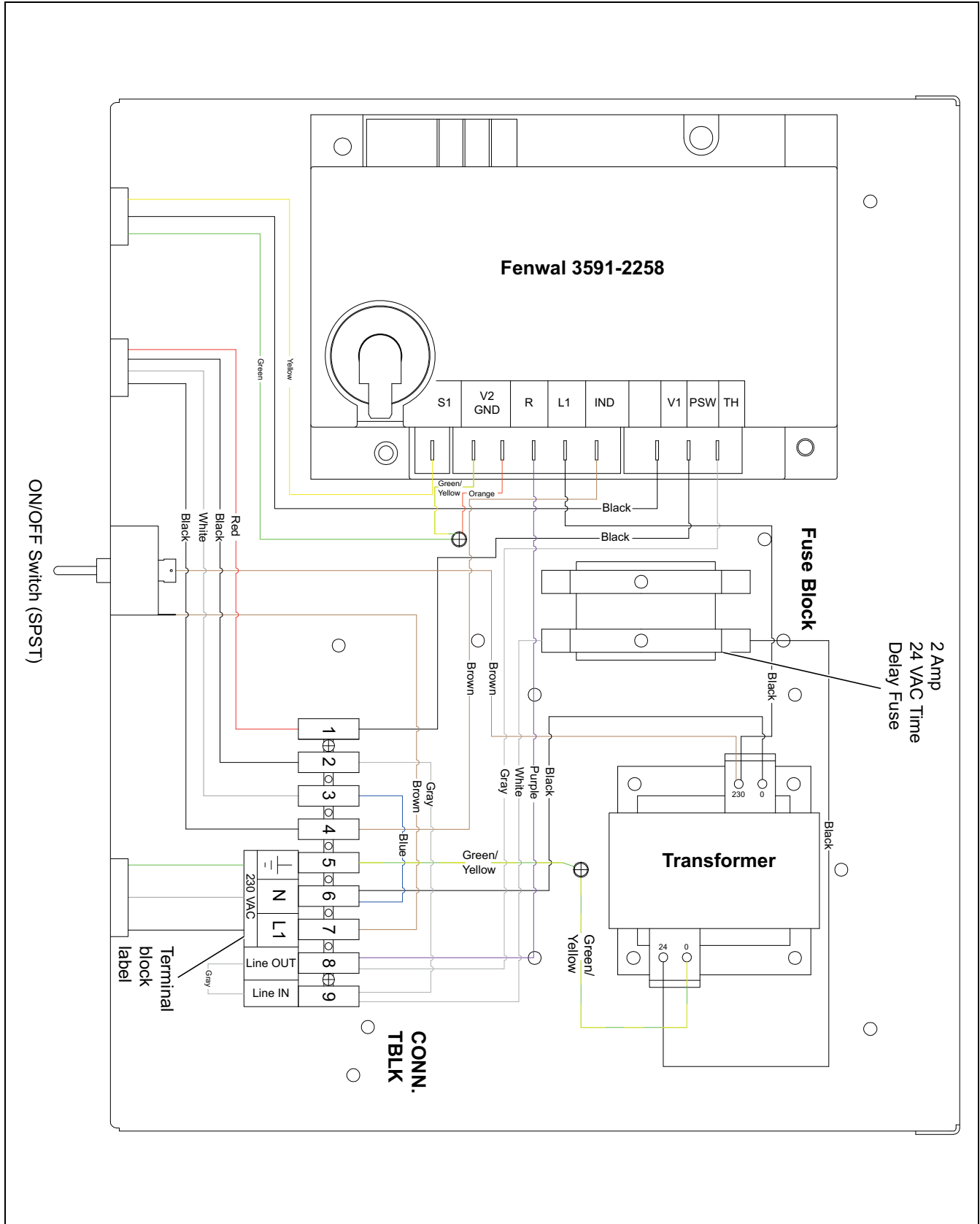


Figure 7 Completed Wiring