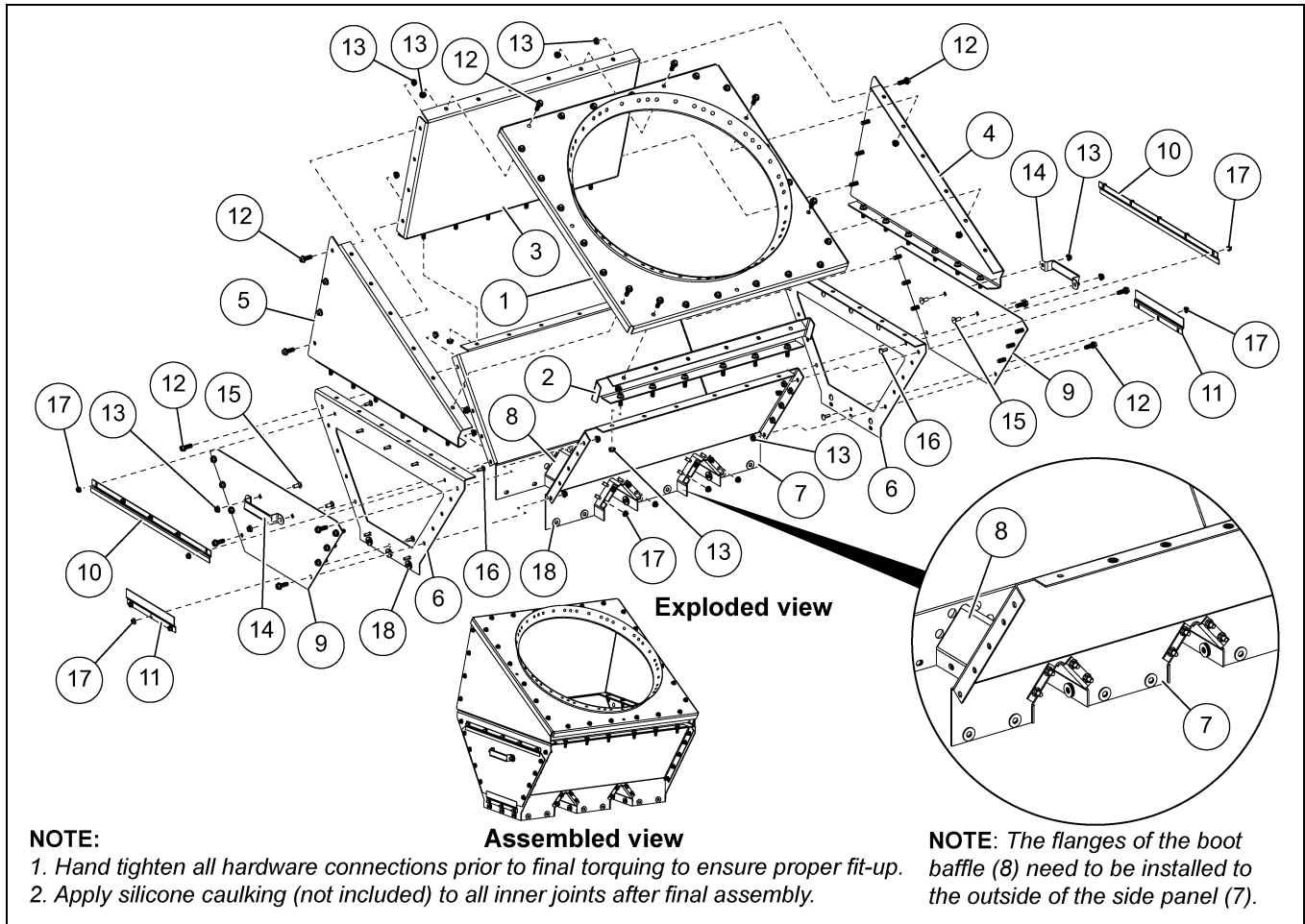




1004 East Illinois Street • Assumption, IL 62510 • 1-217-226-4421

Instructions 22" Triple 30° Boot for 60° and 67° Hopper Assembly



Ref #	Part #	Description	Qty
	FLX-5641	22" Triple 30° Boot for 60° Hoppers	
	FLX-5642	22" Triple 30° Boot for 67° Hoppers	
1	BLK-11331	22" 60° Boot Adapter Plate	1
	BLK-11332	22" 67° Boot Adapter Plate	1
2	FLX-5621	22" 30° Boot Front Panel	1
3	FLX-5622	22" 30° Boot Back Panel	1
4	FLX-5623	22" 30° Boot Right Panel	1
5	FLX-5624	22" 30° Boot Left Panel	1
6	FLX-5340	22" Straight Triple Boot End Panel	2
7	FLX-5341	22" Straight Triple Boot Side Panel	2
8	FLX-5342	22" Straight Triple Boot Baffle	2
9	FLX-5343	22" Straight Triple Boot End Panel Access Door	2
10	FLX-5344	22" Straight Triple Boot Guide Offset - Top	2
11	FLX-5345	22" Straight Triple Boot Guide Offset - Bottom	2
12	S-10260	Flange Bolt 5/16"-18 x 1", Grade 8 or 8.2, JS500 or JS1000 Full Thread with Sealing Washer	44
13	S-10268	Flange Nut 5/16"-18 JS500 Grade 5	48
14	PR-331	Peak Cap Handle	2
15	S-7645	Carriage Bolt 5/16"-18 x 3/4" ZN Grade 5	4
16	S-9080	Carriage Bolt 1/4"-20 x 3/4" ZN Grade 5	32
17	S-7215	Flange Nut 1/4"-20 ZN	32
18	S-845	Flat Washer 5/16" USS ZN	66

Date: 08-12-20

V1.0

Printed in the USA
Copyright © 2020 by The GSI Group, LLC
www.automatedproduction.com /
www.cumberlandpoultry.com



PNEG-2329

Page 1 of 1
CN-360865