

ELECTRONIC **SOW FEEDER**



UNLOCK BETTER PERFORMANCE

THE BETTER WAY TO **FEED SOWS**

The Electronic Sow Feeder (ESF) is totally flexible in its implementation and readily applicable to retrofitting existing facilities. Our expert team will provide concept designs that include recommendations on pen size, shape and detail to help acclimate sow to the social hierarchy in group housing.

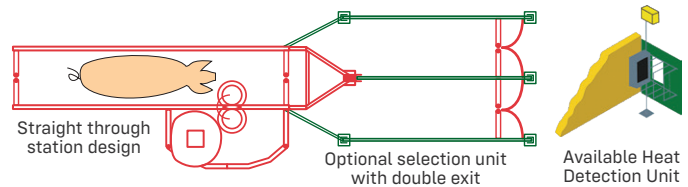
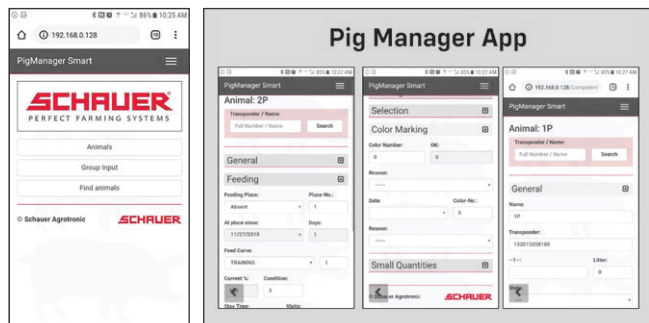


HIGHLIGHTS

- Feed up to 80 sows per unit.
- Feed station recognizes sow through RFID tag.
- Pneumatic feed dispenser.
- Micro-doser allows for computer control supplementation of diets.
- Feed is mixed with water to improve palatability.
- Straight-ahead exit and retractable feed bowl to maximize animal throughput.
- Station can be programmed to sort animals based on production criteria.
- Boar station records female interest in the boar for heat detection.
- Optional double exit gates
- Color coding (2 per feed station)
- Easy push button control for quick access to system functions at the station.

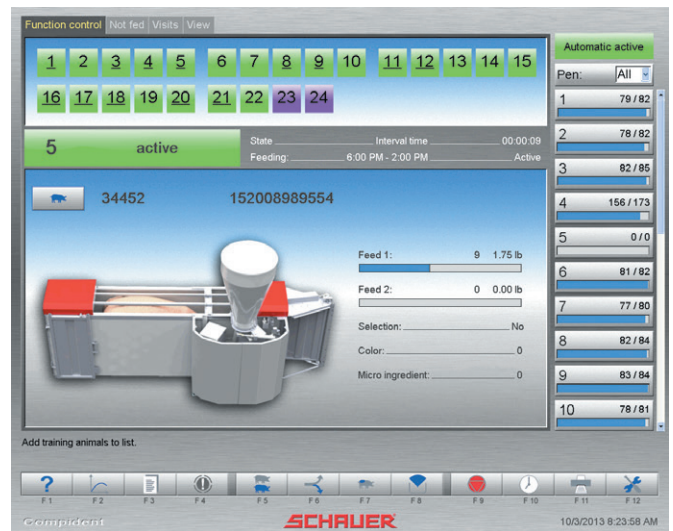
REMOTE CONTROL

RFID wand connects to a mobile device and operates the Schauer Pig Manager Smart System allowing adjustments to feed parameters, control feed station functions and run diagnostics.



USER-FRIENDLY INTERFACE

Point and click navigation provides a clear overview of the feed strategy and current feeding status.



Contact your AP representative or visit automatedproduction.com for more information.